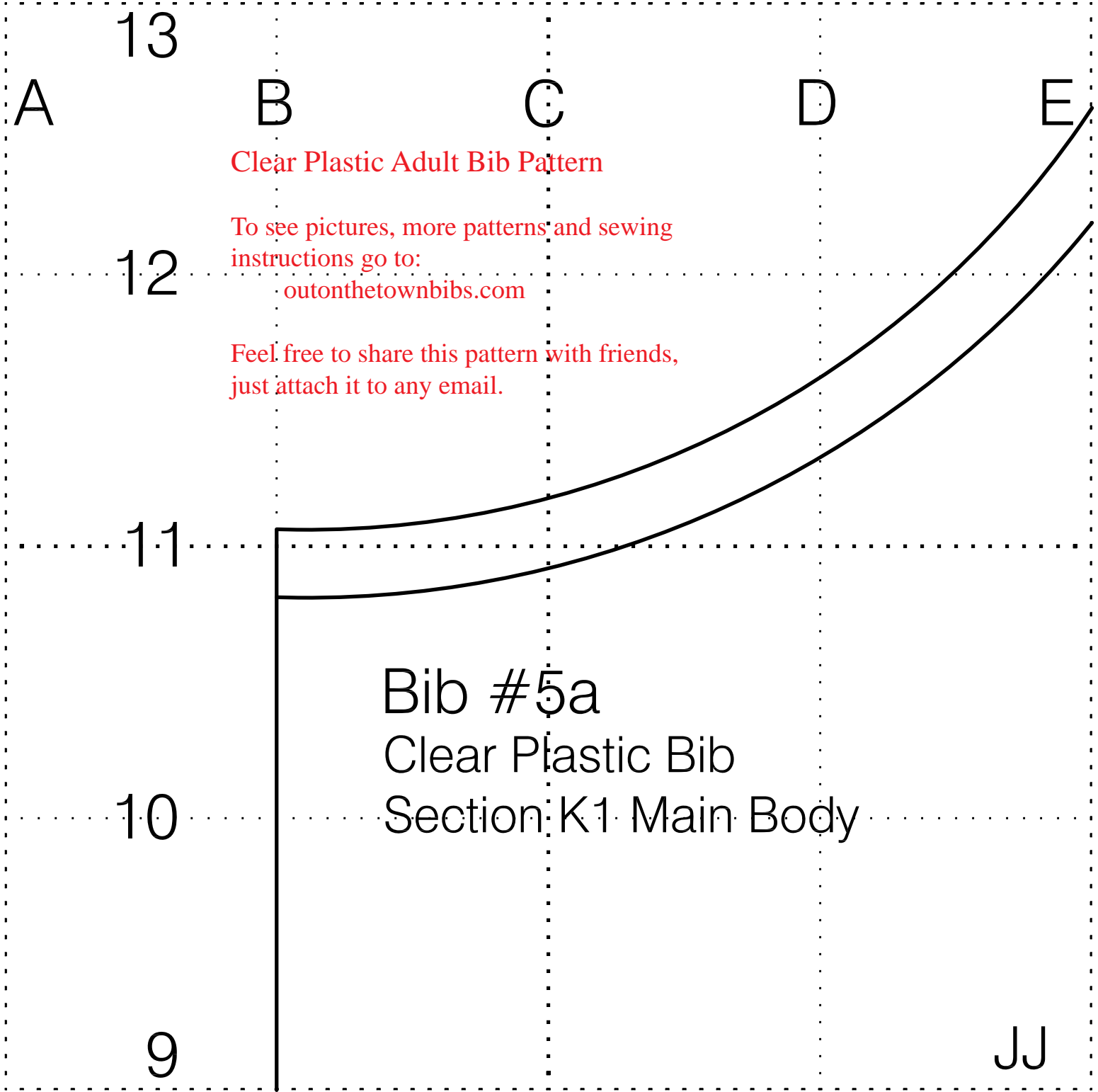
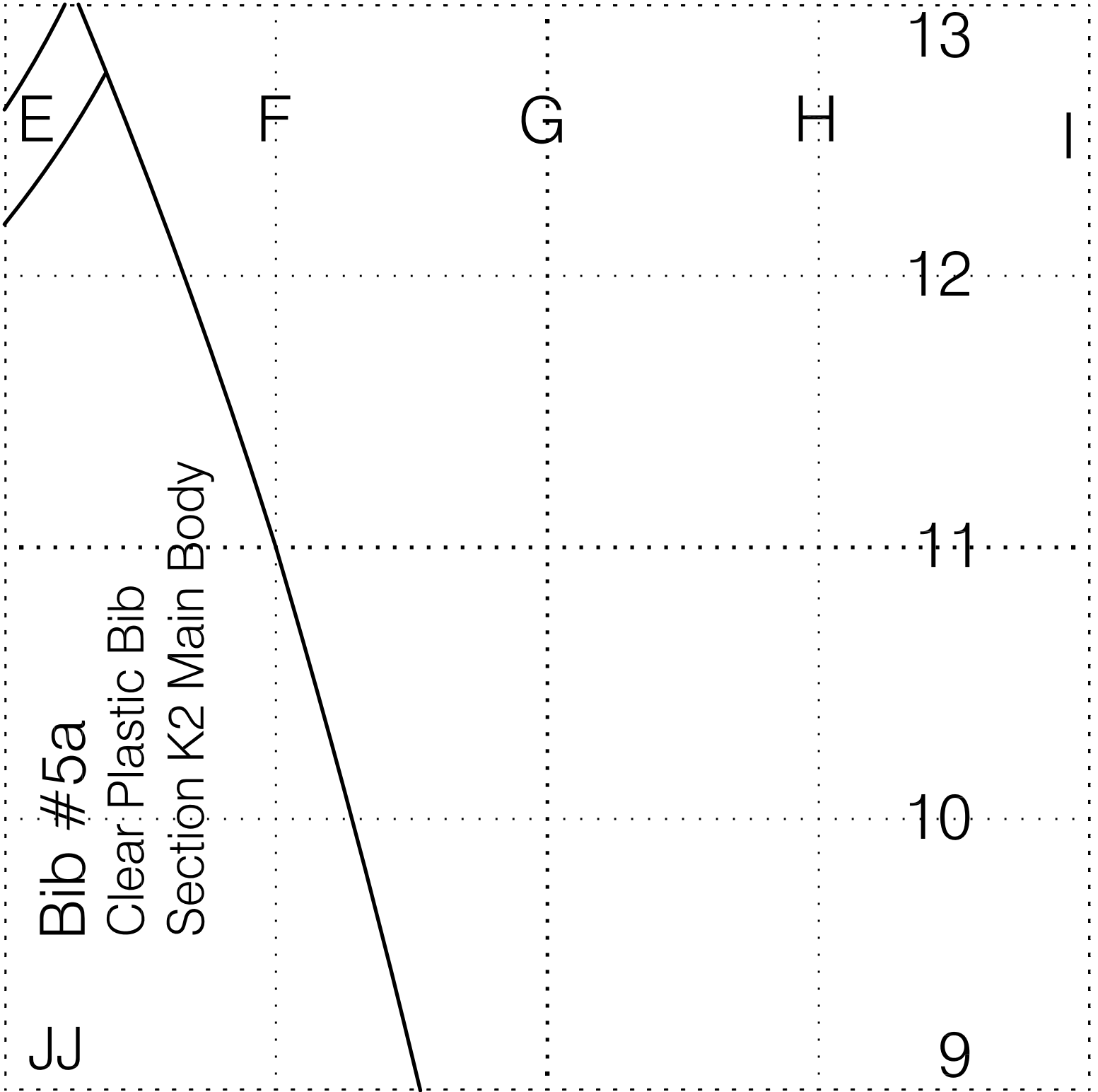


Full Scale Pattern

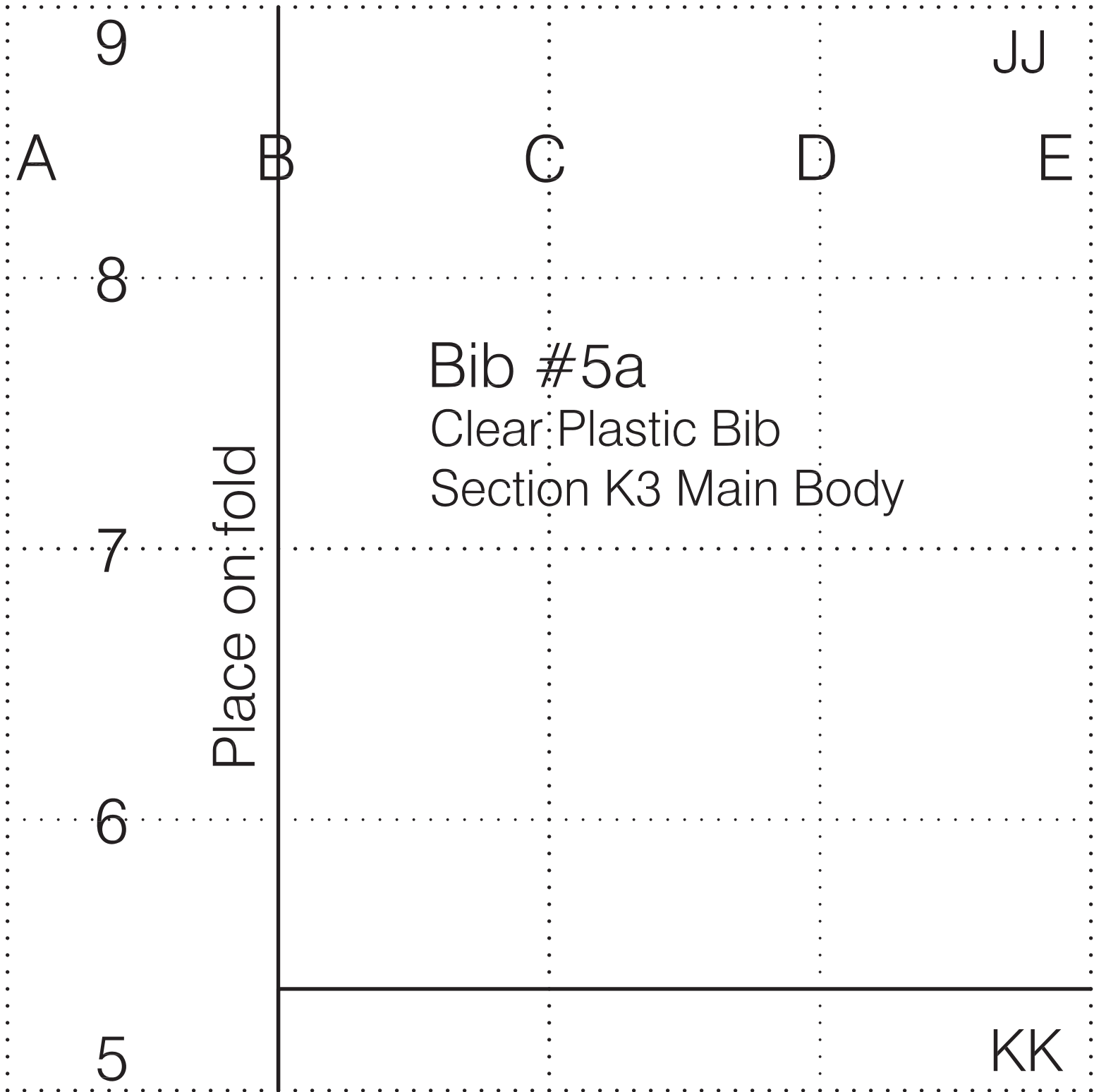


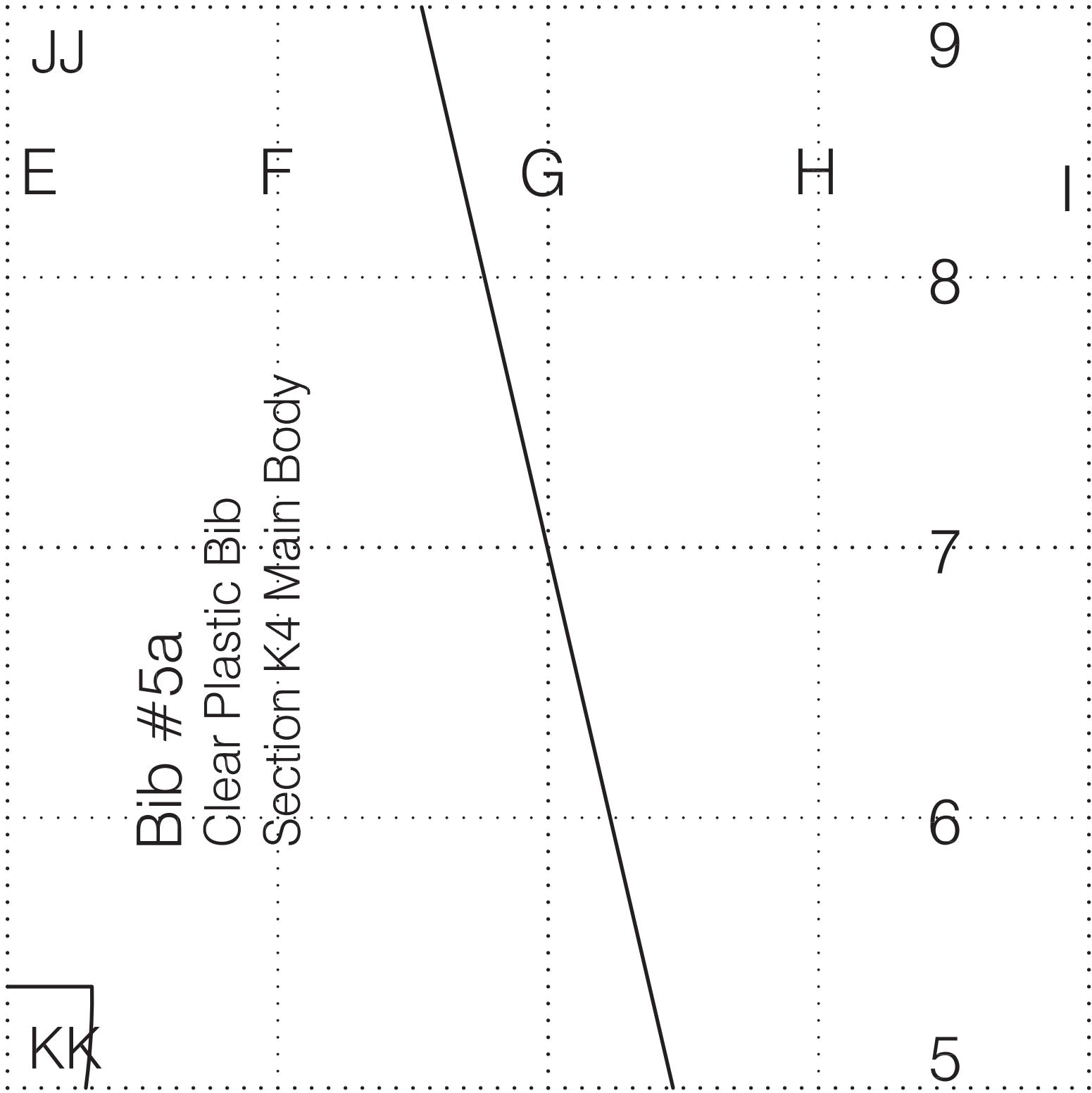


Bib #5a

Clear Plastic Bib

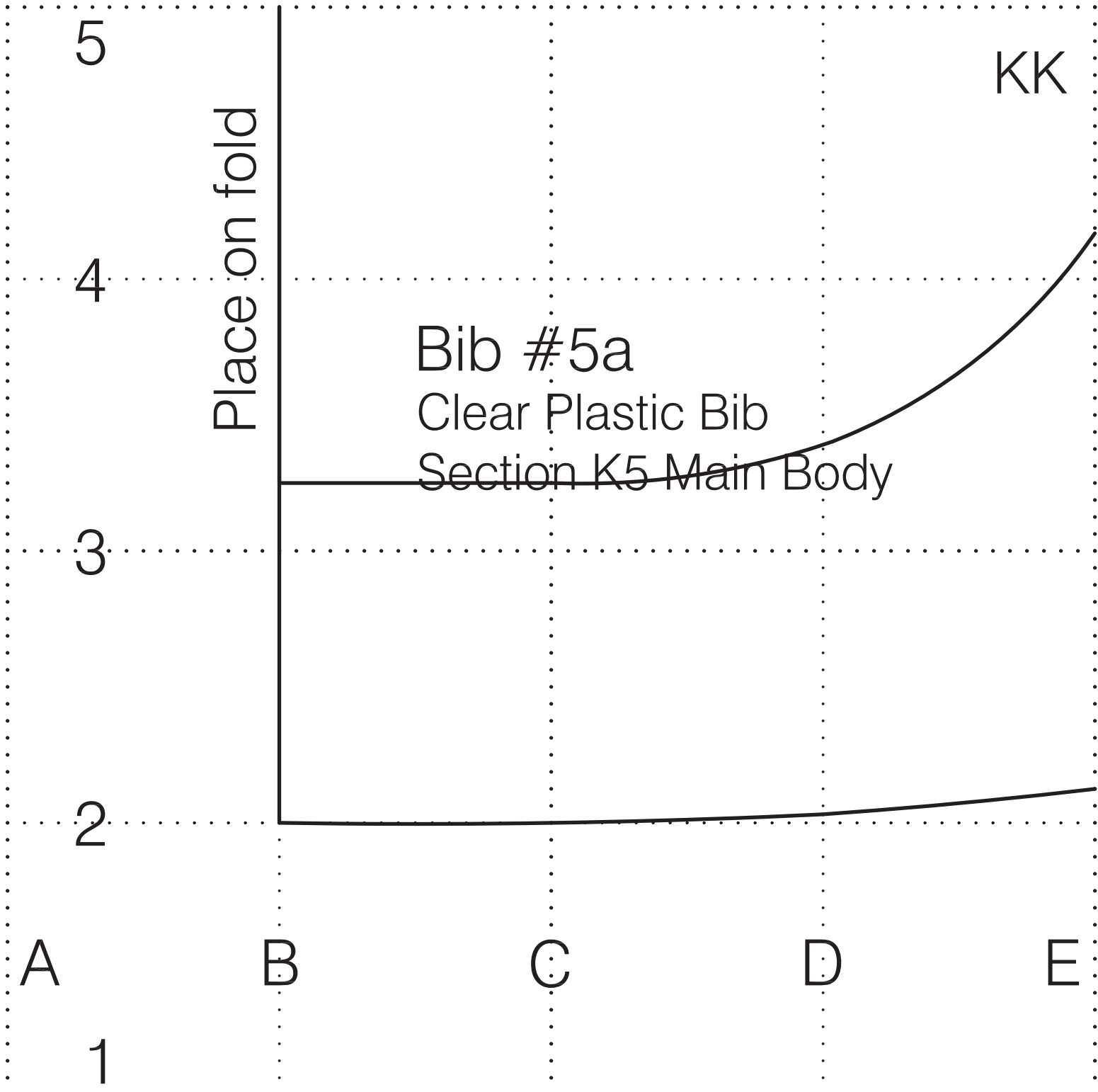
Section K2 Main Body

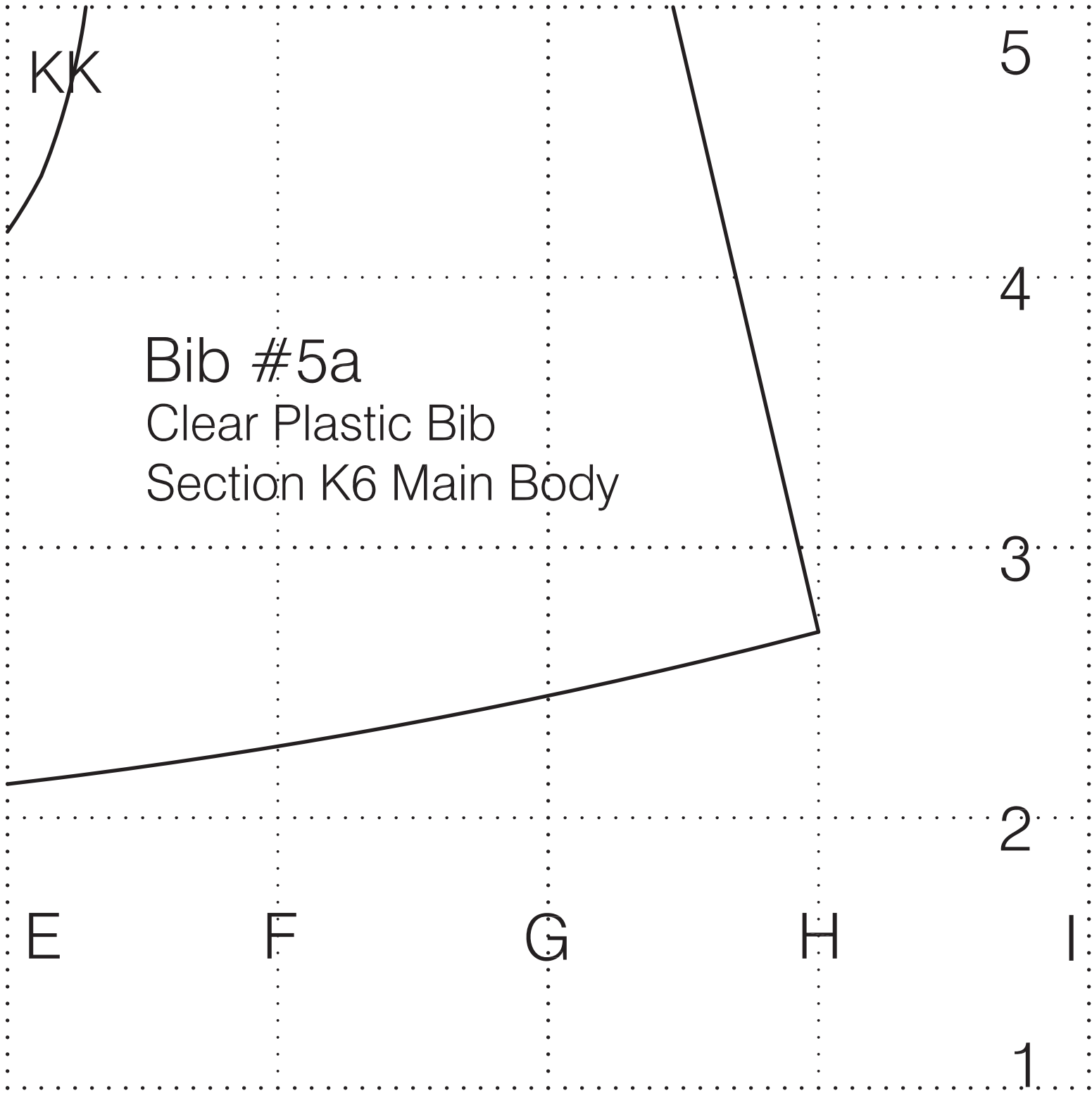




Bib #5a
Clear Plastic Bib
Section K4 Main Body

KK





Bib #5a
Clear Plastic Bib
Section K6 Main Body

Bib #5a
Clear Plastic Bib
Section L Drip Pocket

Place on fold

5

A

B

C

D

E

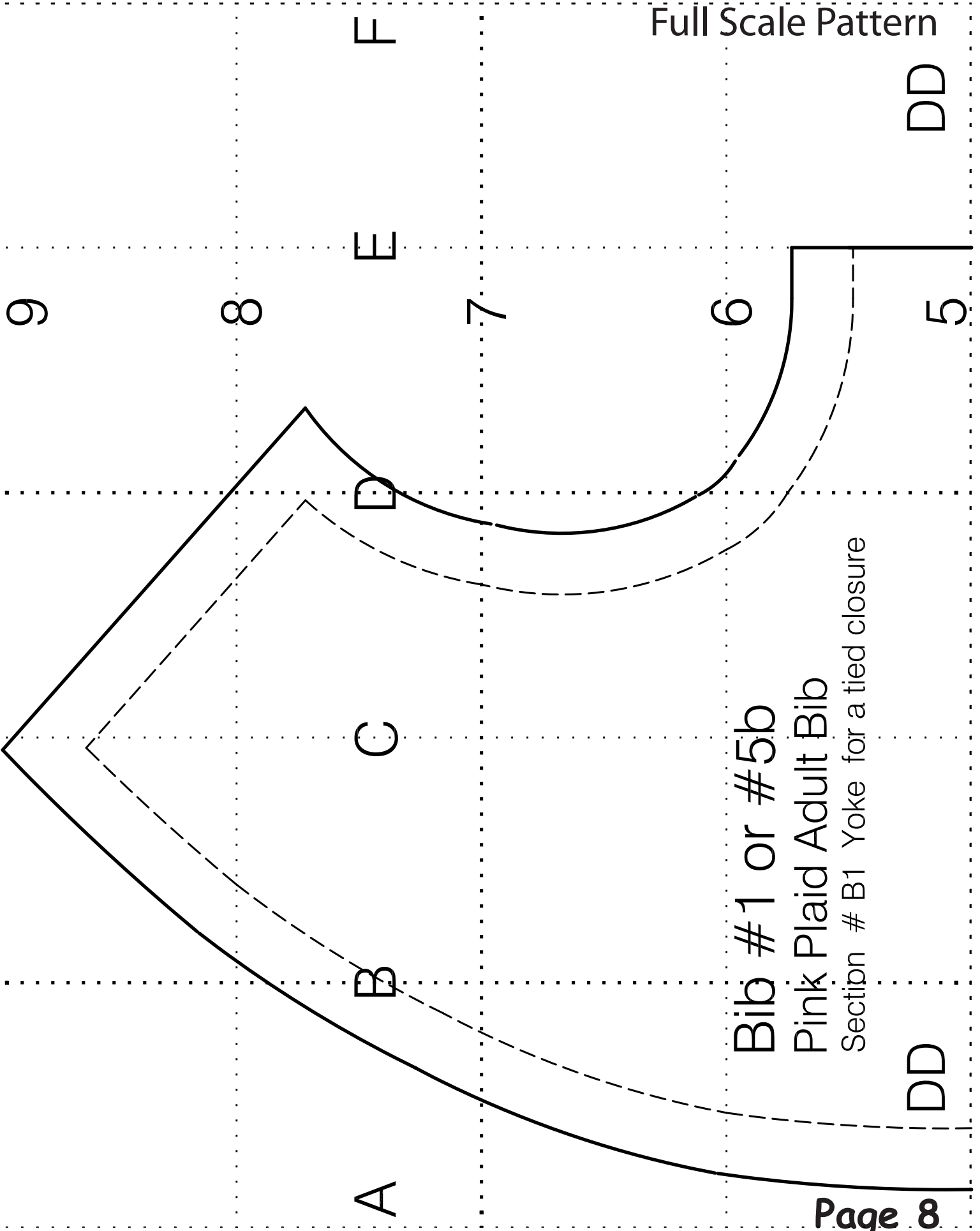
F

4

3

2

1



Bib #1 or #5b

Pink Plaid Adult Bib

Section # B1 Yoke for a tied closure

DD

DD

DD

Place on Fold

5

4

3

E

2

1

Bib #1 or #5b

Pink Plaid Adult Bib

Section # B2. Yoke for a tied closure

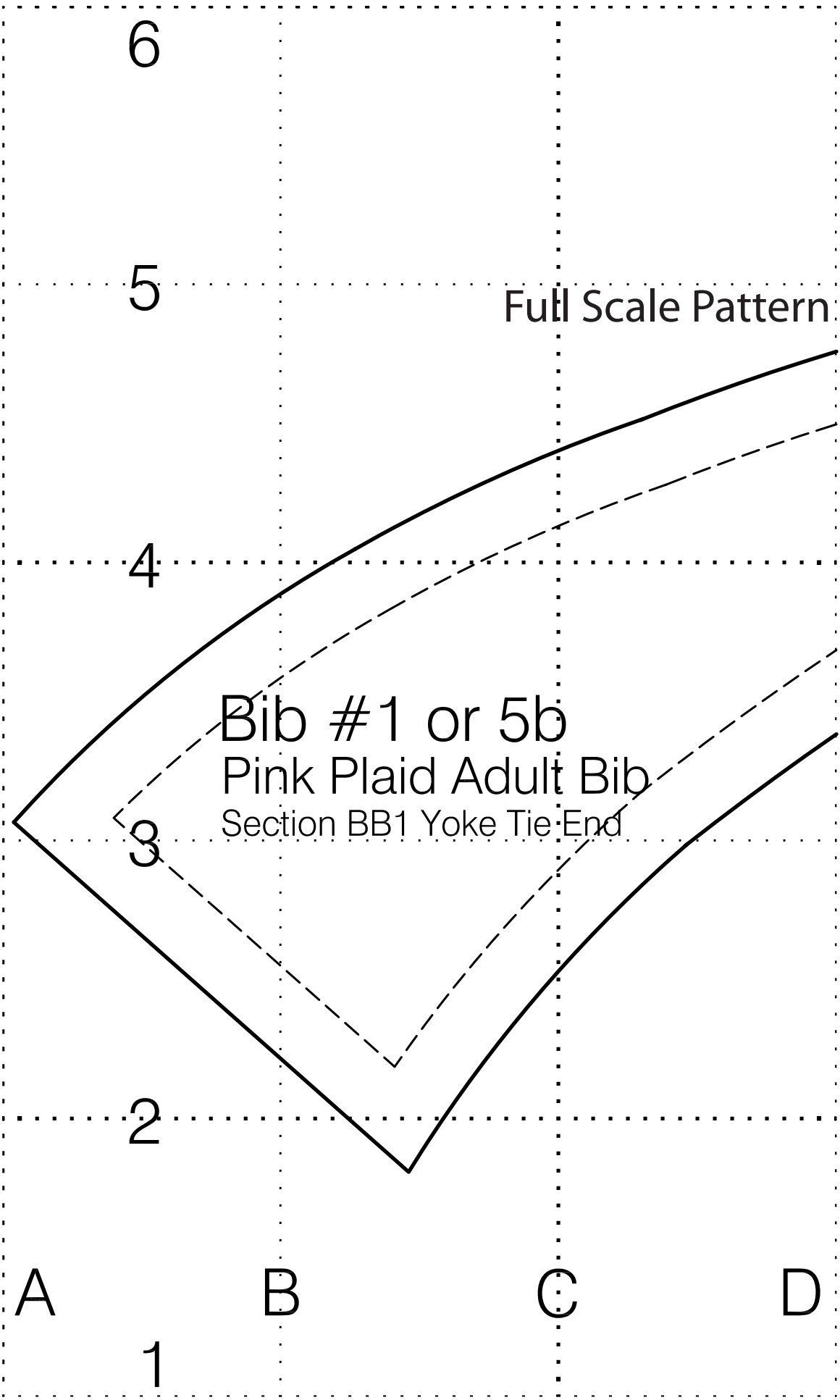
D

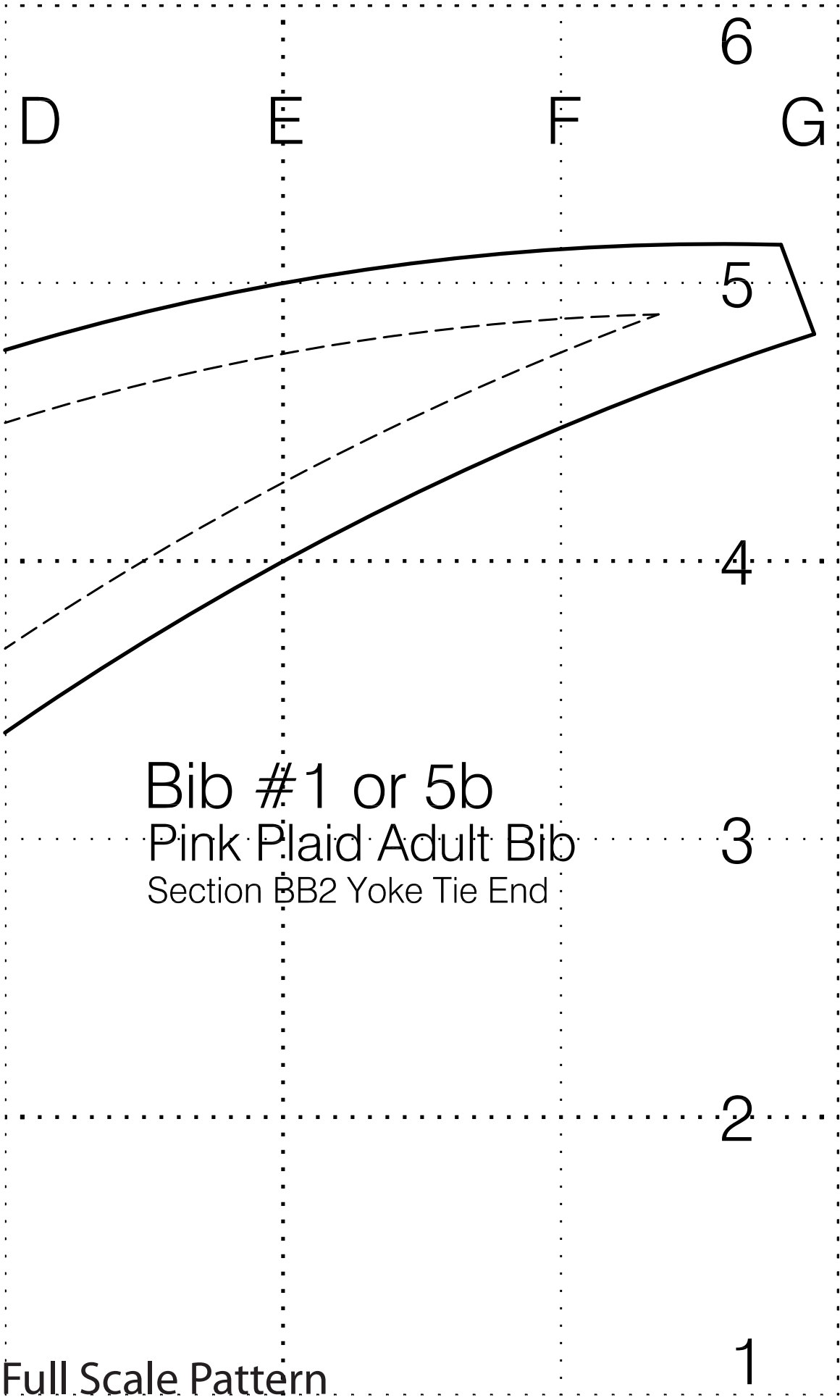
C

B

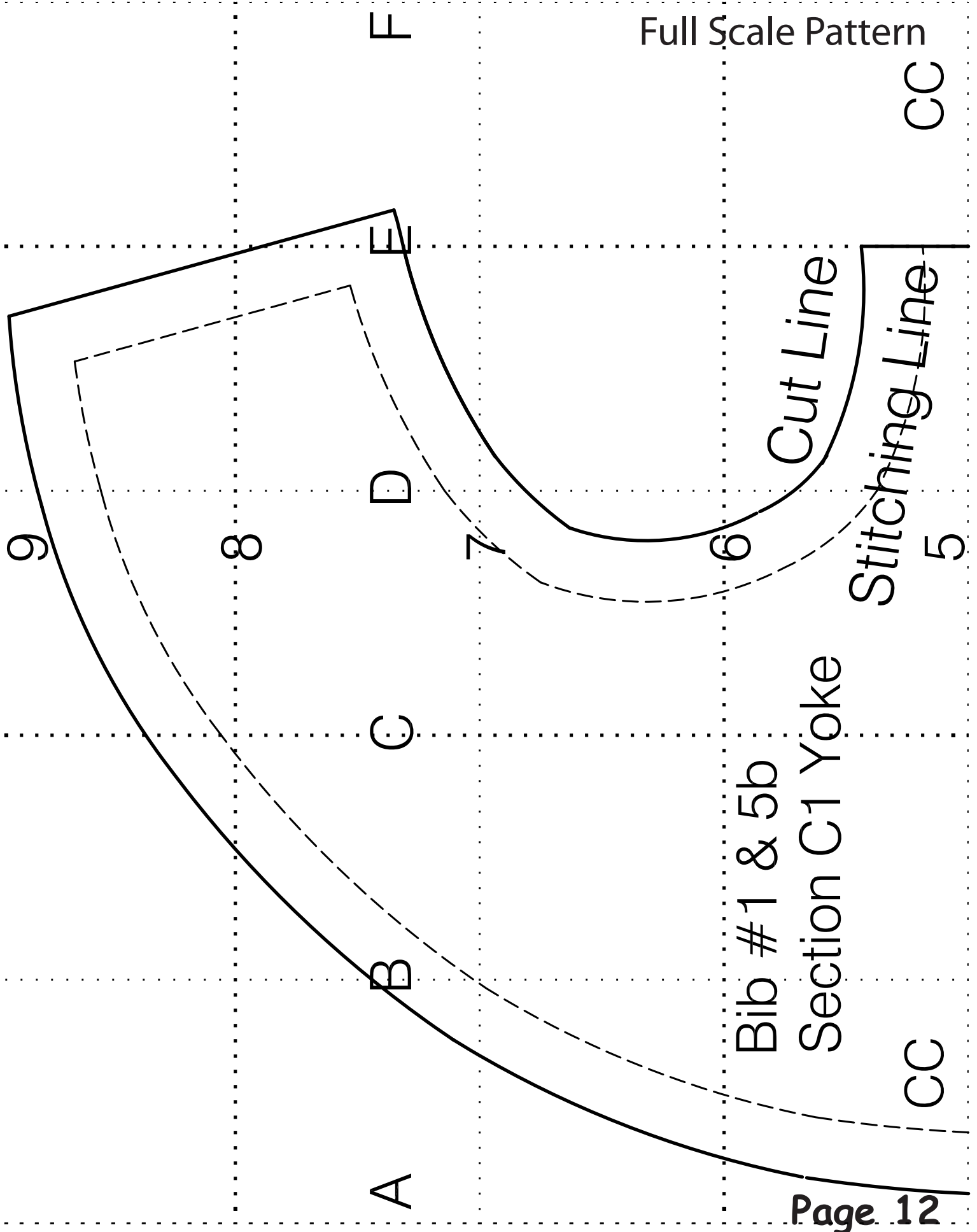
A

DD





Bib # 1 or 5b
 Pink Plaid Adult Bib
 Section BB2 Yoke Tie End



Bib #1 & 5b
 Section C1 Yoke

Full Scale Pattern

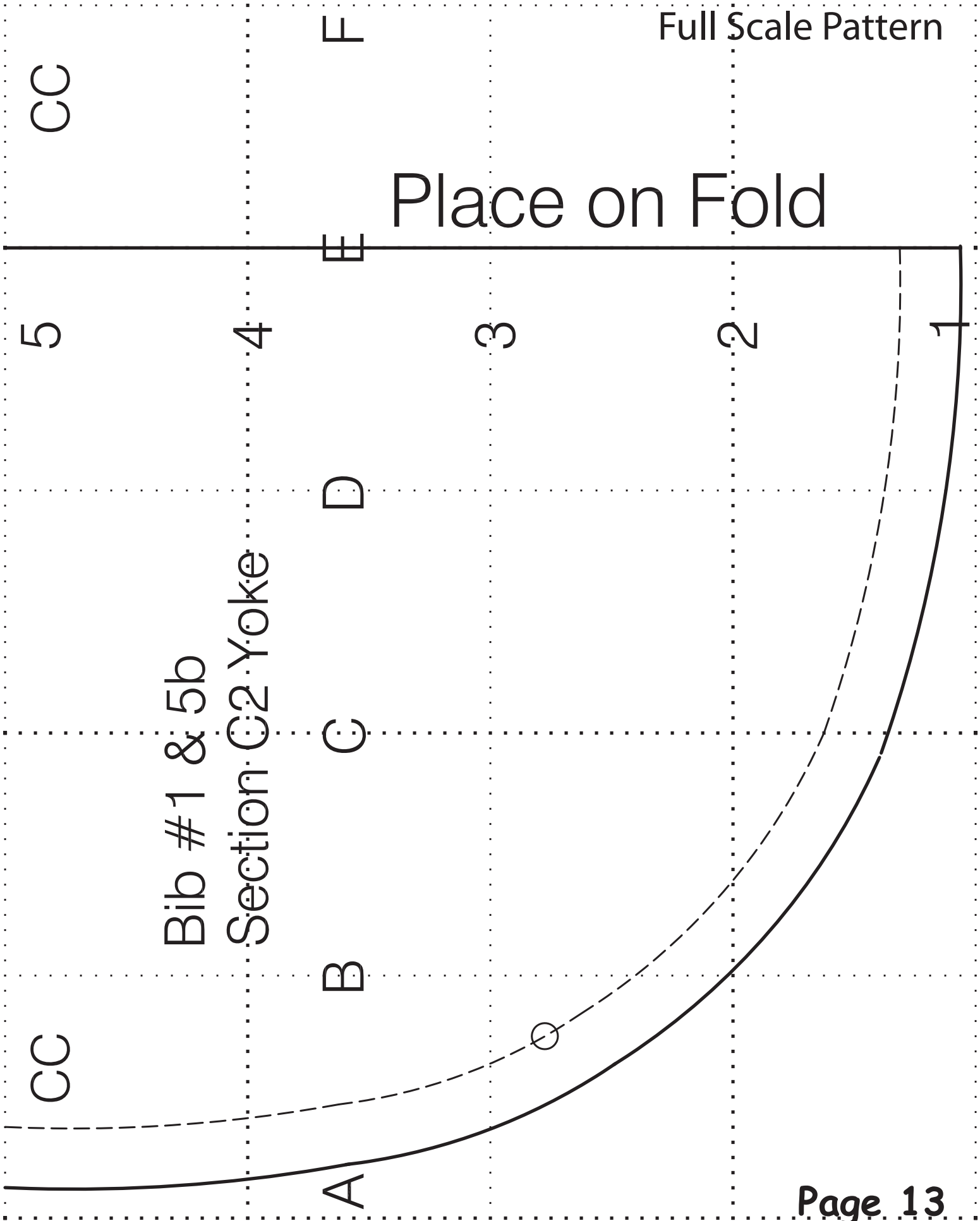
Cut Line

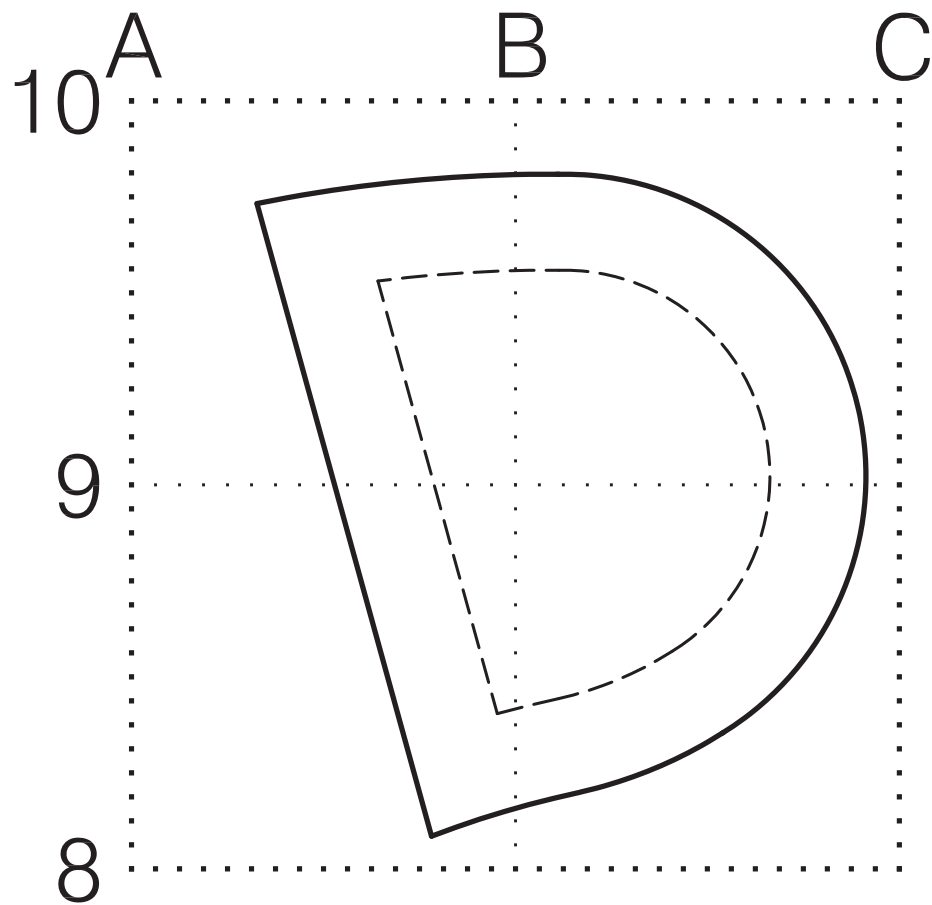
Stitching Line

CC

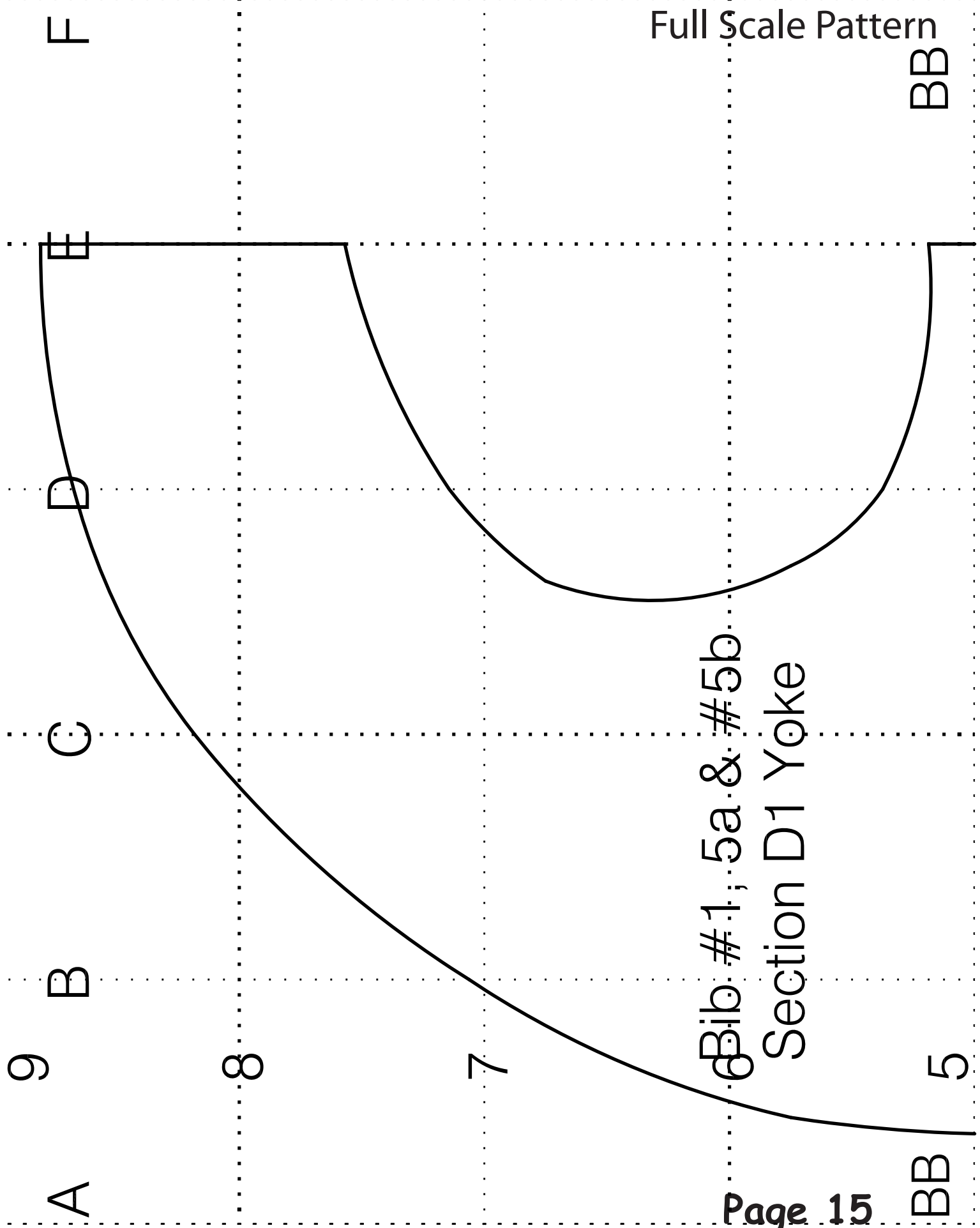
CC

Place on Fold





Bib #1 or 5b
Pink Plaid Adult Bib
Section CC Yoke Tie End



Full Scale Pattern

BB

F

E

D

C

B

9

8

7

Bib. #1, 5a & #5b

Section D1 Yoke

A

5

Page 15

BB

F

BB

Place on Fold

E

D

Bib #1,5a & #5b
Section D2 Yoke

C

B

5

4

3

2

1

A

BB