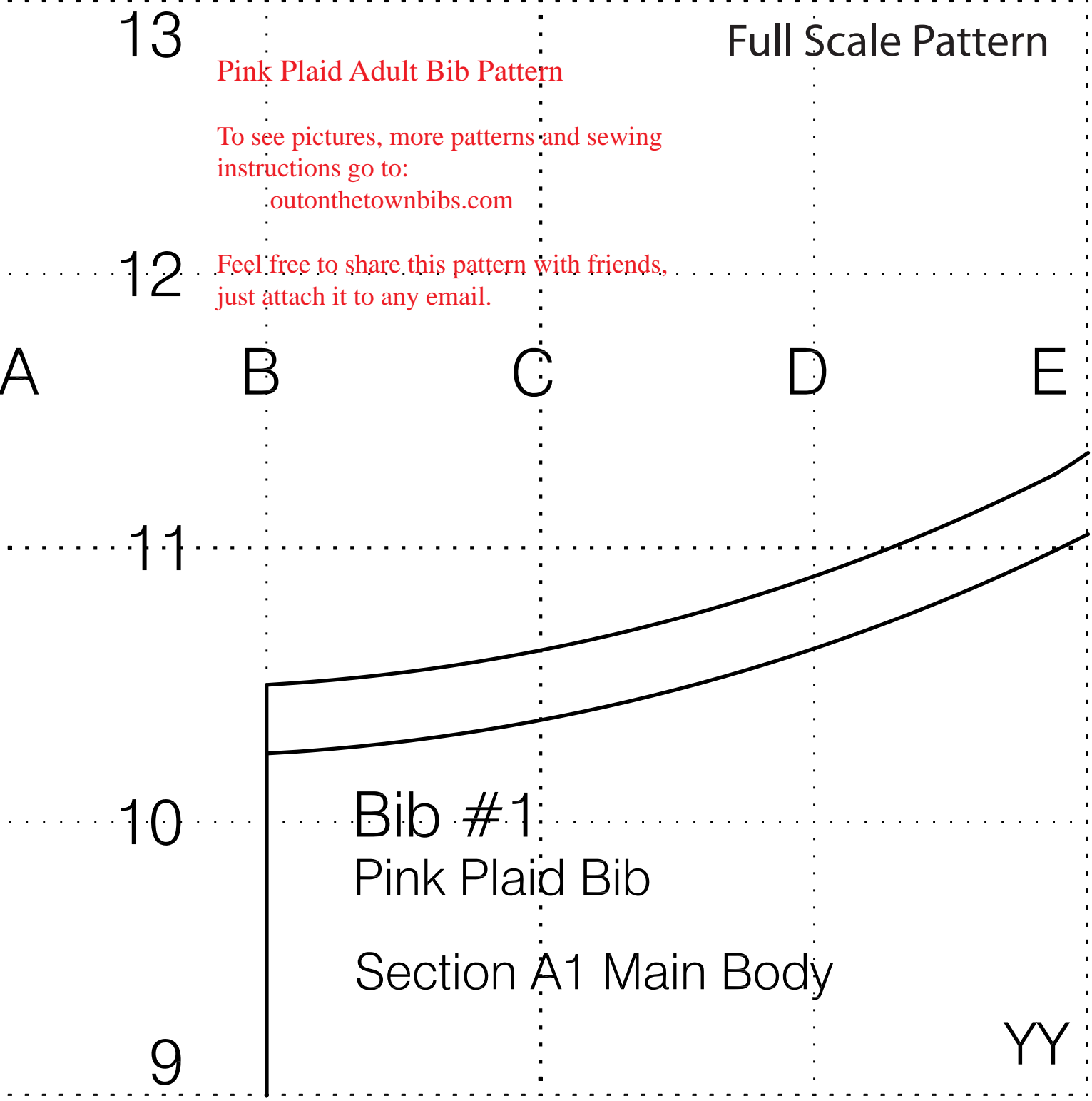


Full Scale Pattern

Pink Plaid Adult Bib Pattern

To see pictures, more patterns and sewing instructions go to:
outonthetownbibs.com

Feel free to share this pattern with friends, just attach it to any email.



E_{Tip}



F

G

H

I

13

12

11

10

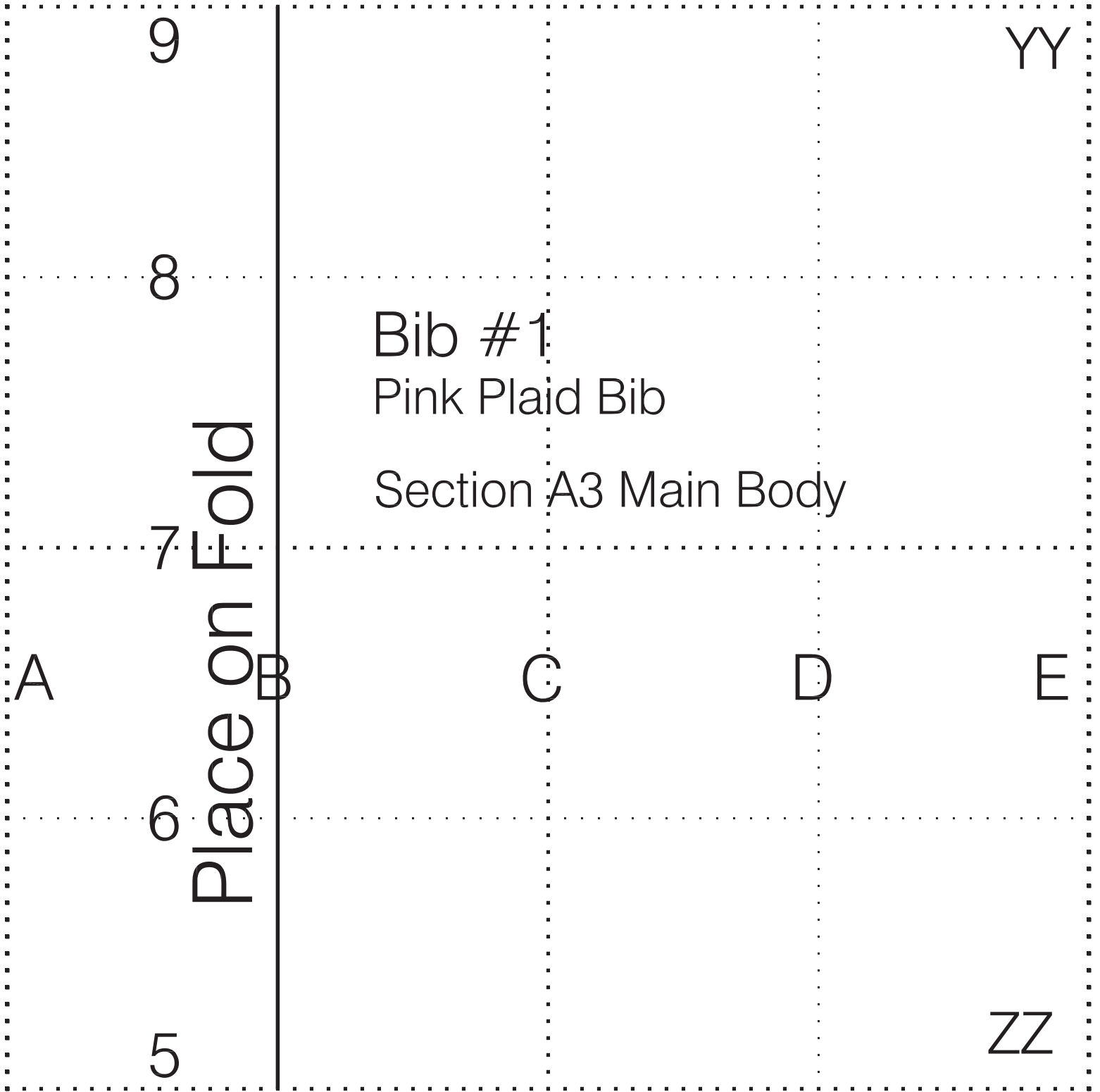
9

Bib #1

Pink Plaid Bib

Section A2 Main Body

YY



YY

E

F

G

H

I

9

8

7

6

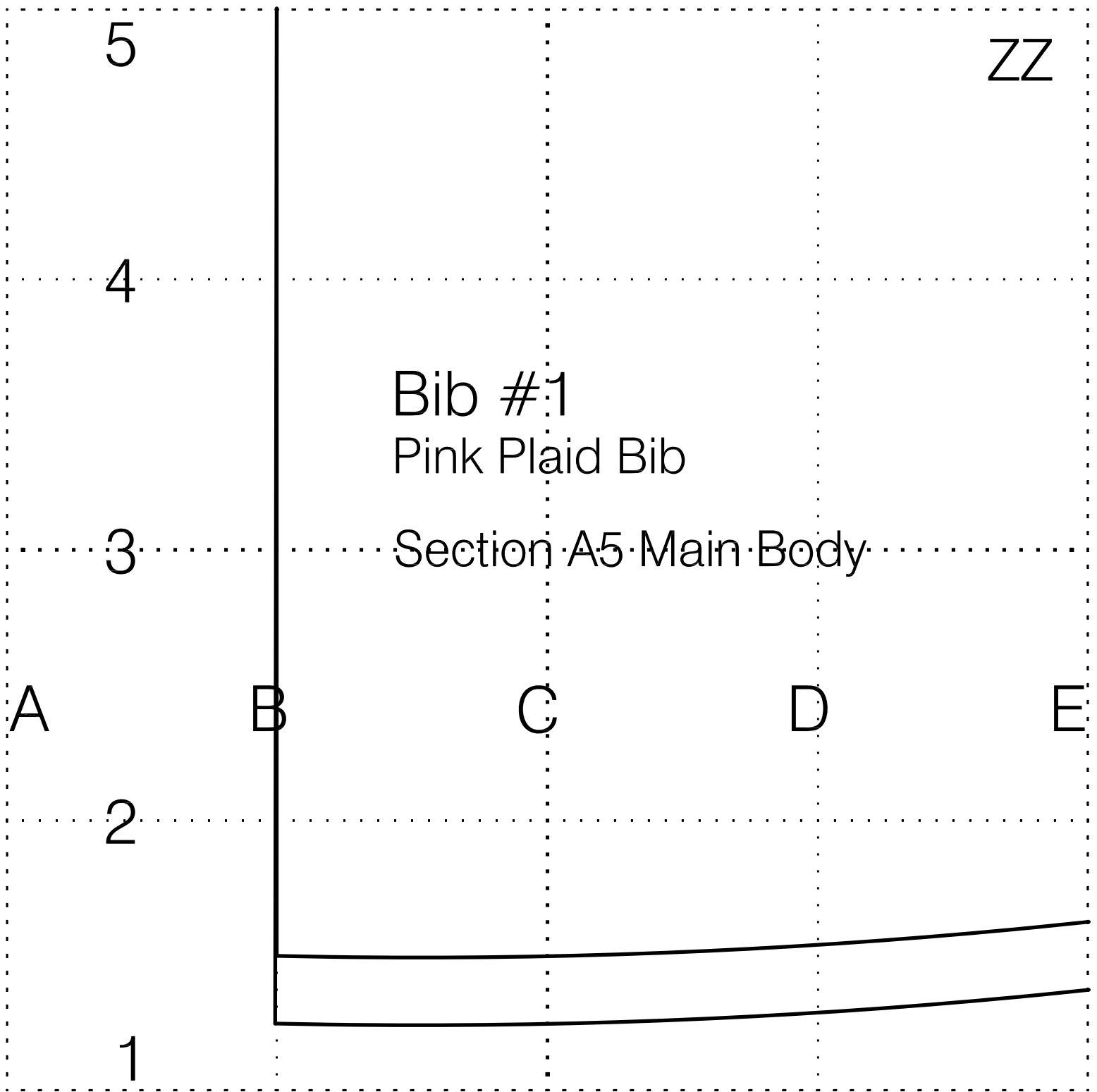
5

Bib #1

Pink Plaid Bib

Section A4 Main Body

ZZ



ZZ

5

Full Scale Pattern

Bib #1

Pink Plaid Bib

Section A6 Main Body

4

3

2

1

E

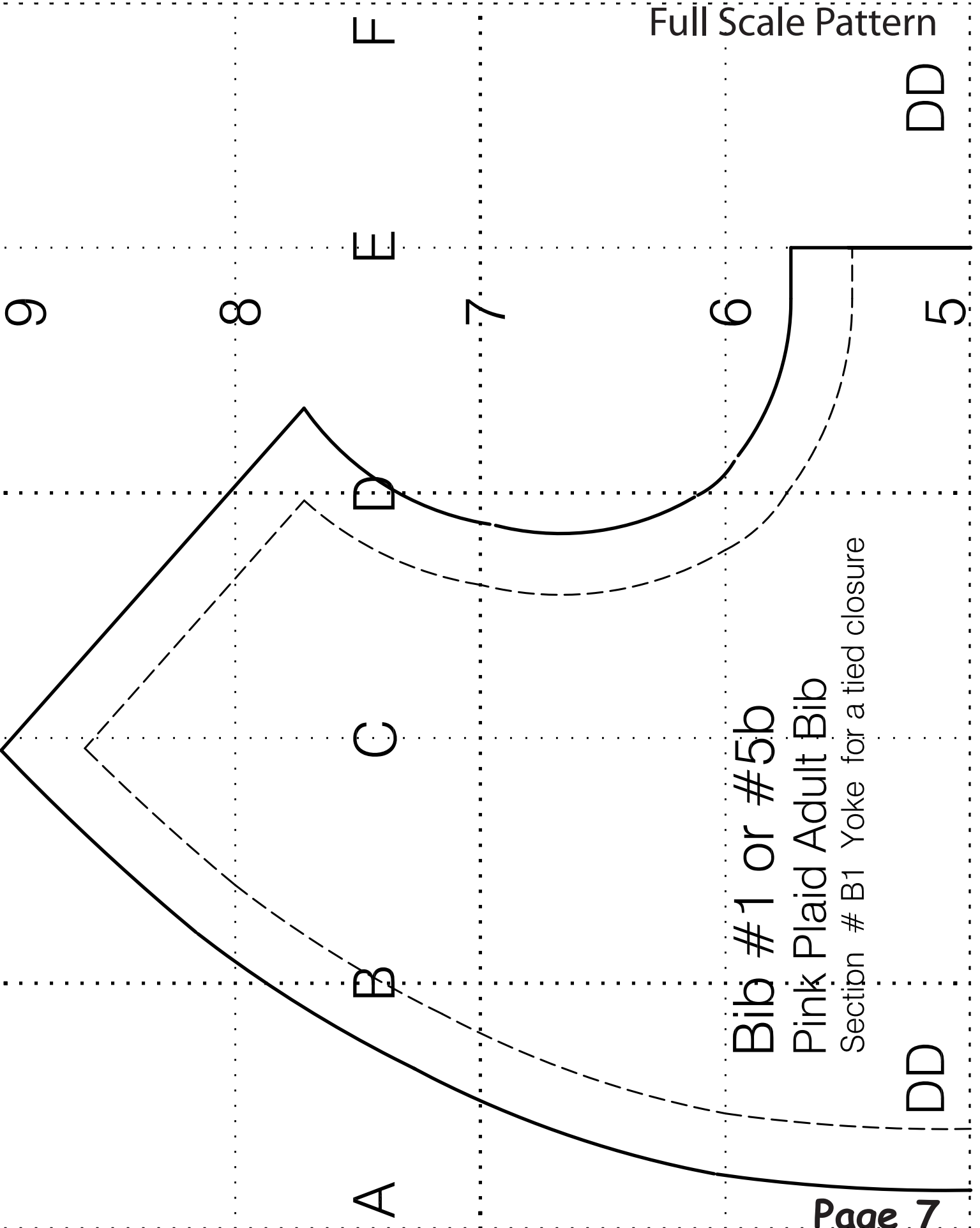
F

G

H

I

J



Bib #1 or #5b
Pink Plaid Adult Bib

Section # B1 Yoke for a tied closure

A

B

C

D

E

F

9

8

7

6

5

DD

DD

DD

Place on Fold

5

4

3

F

2

1

Bib #1 or #5b
Pink Plaid Adult Bib

Section # B2 Yoke for a tied closure

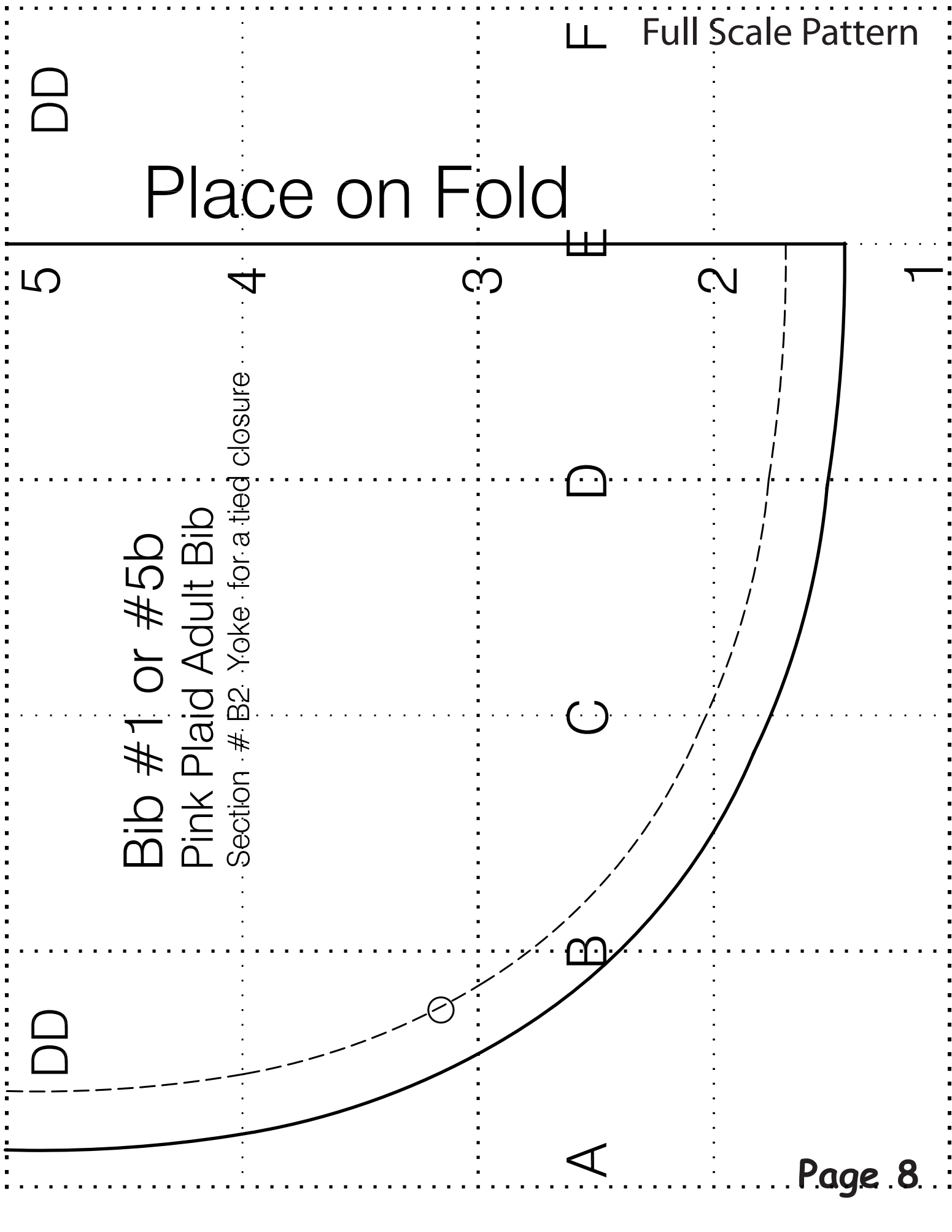
D

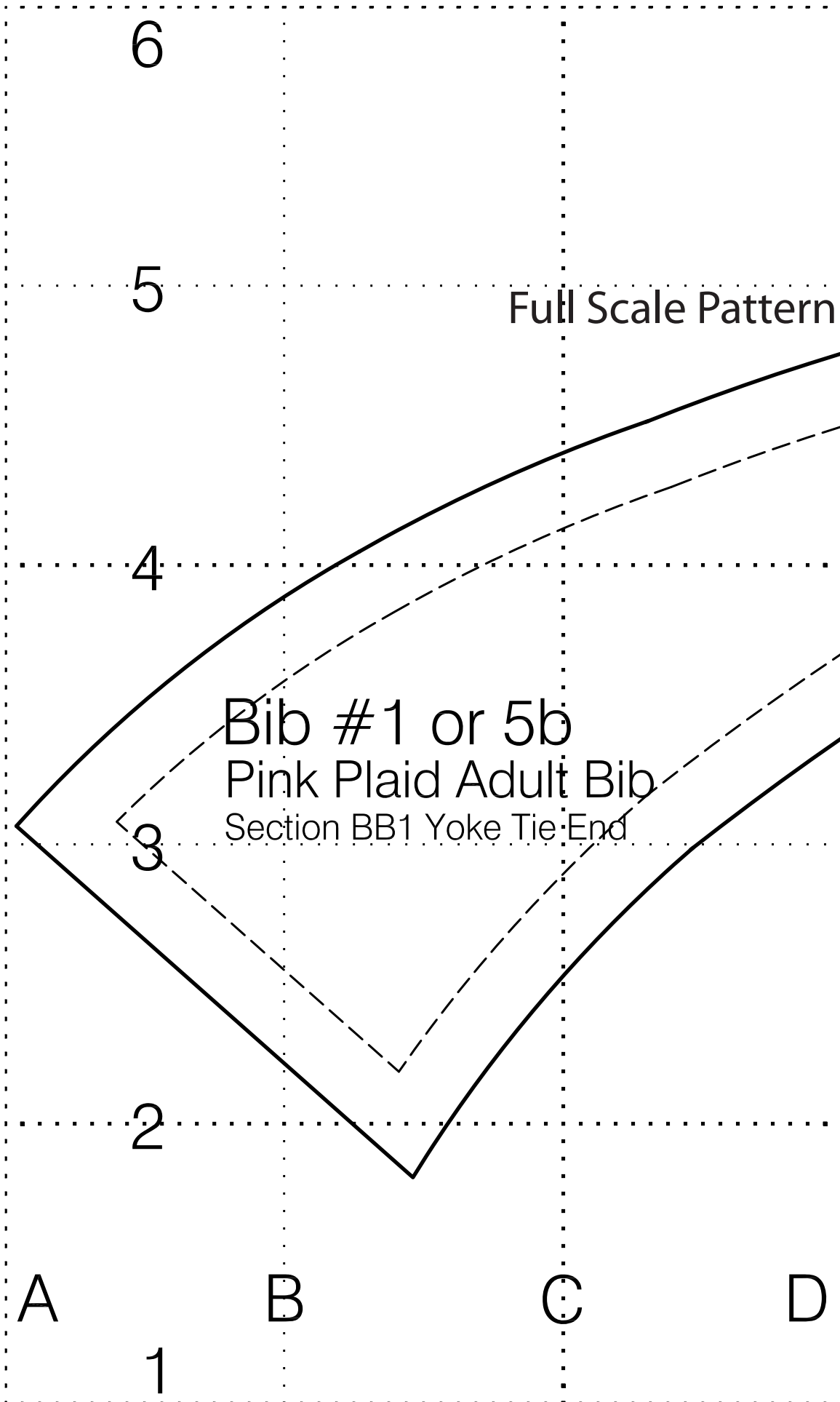
C

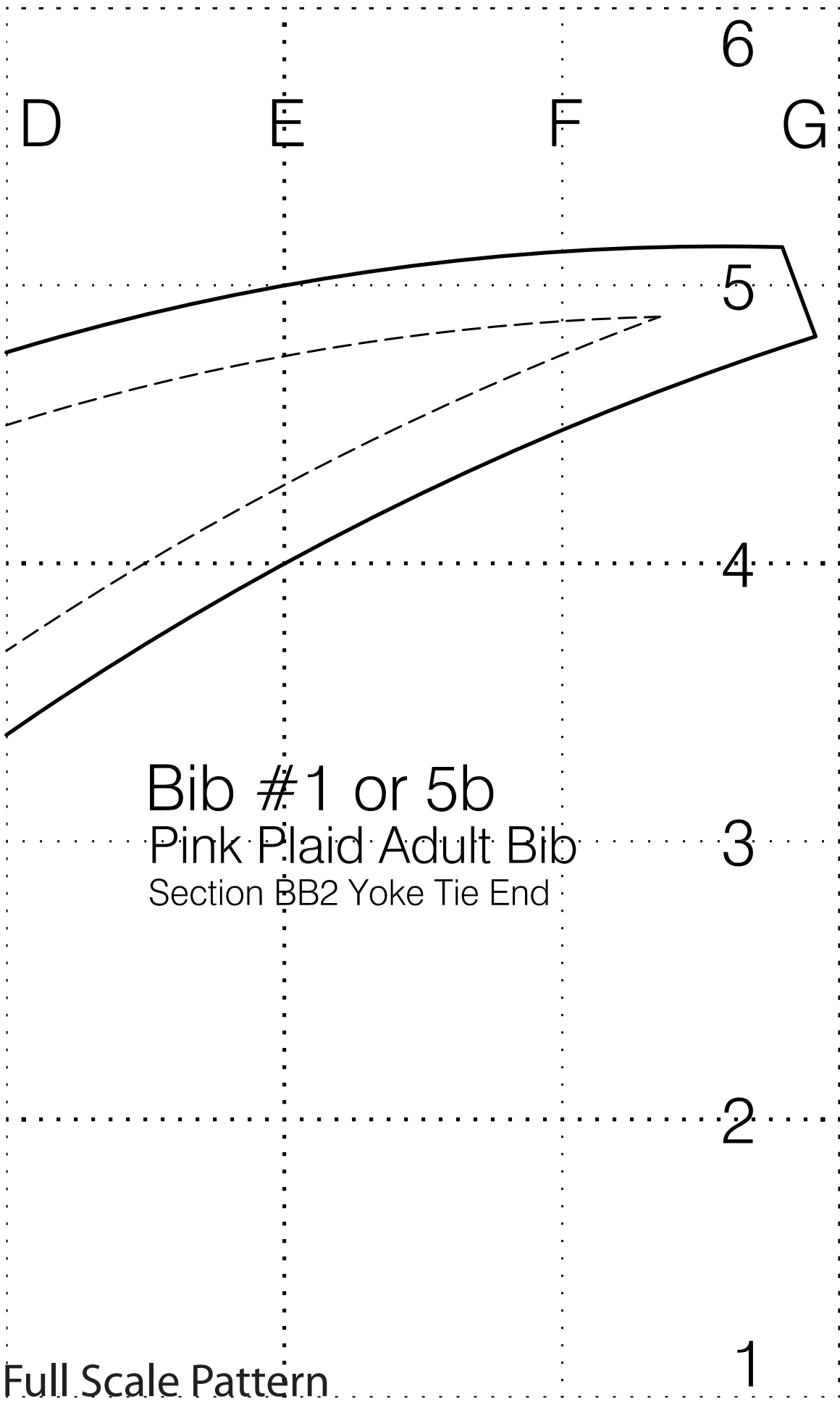
B

A

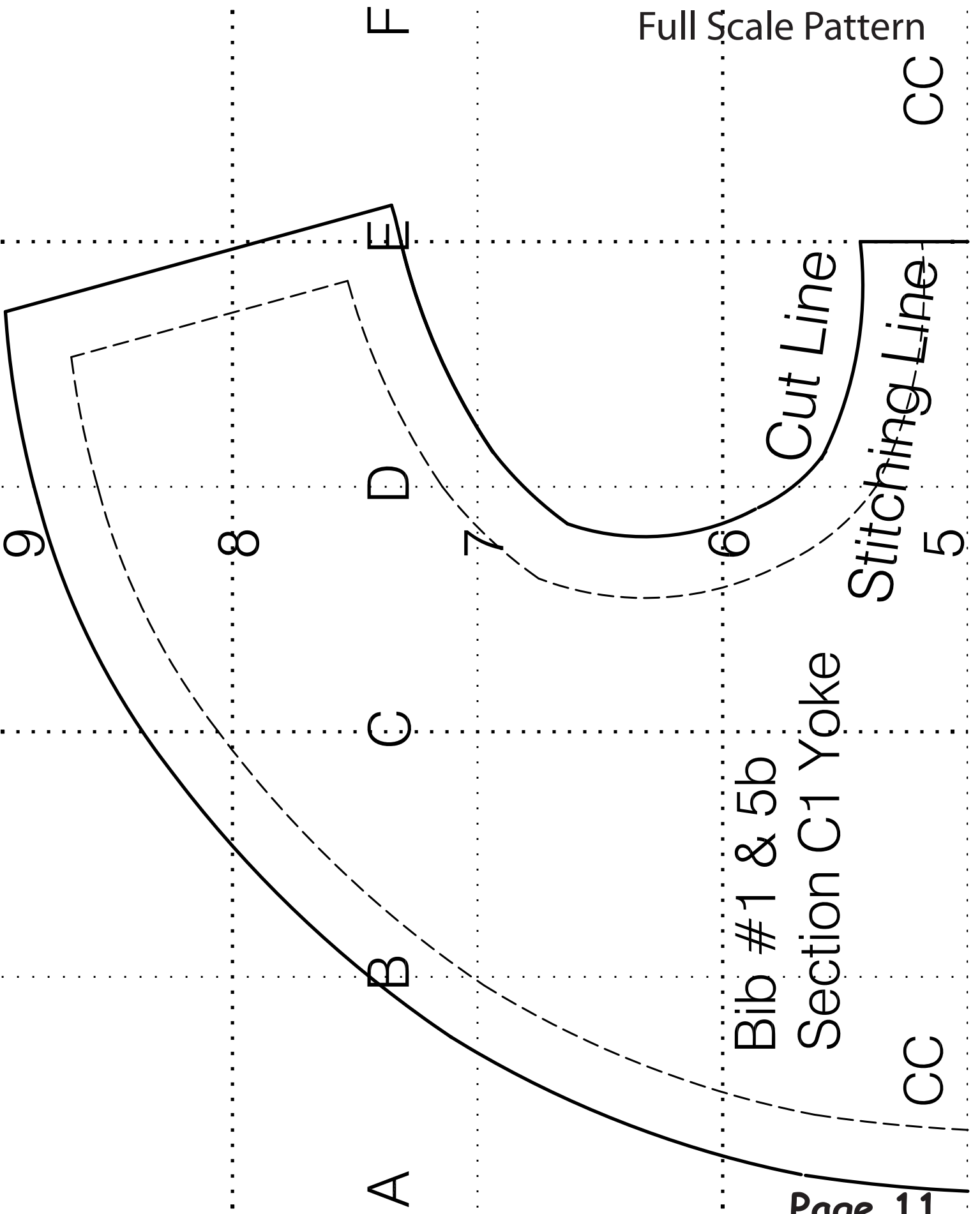
DD







Bib #1 or 5b
 Pink Plaid Adult Bib
 Section BB2 Yoke Tie End



Bib #1 & 5b

Section C1 Yoke

Cut Line

Stitching Line

F

E

D

C

B

A

9

8

7

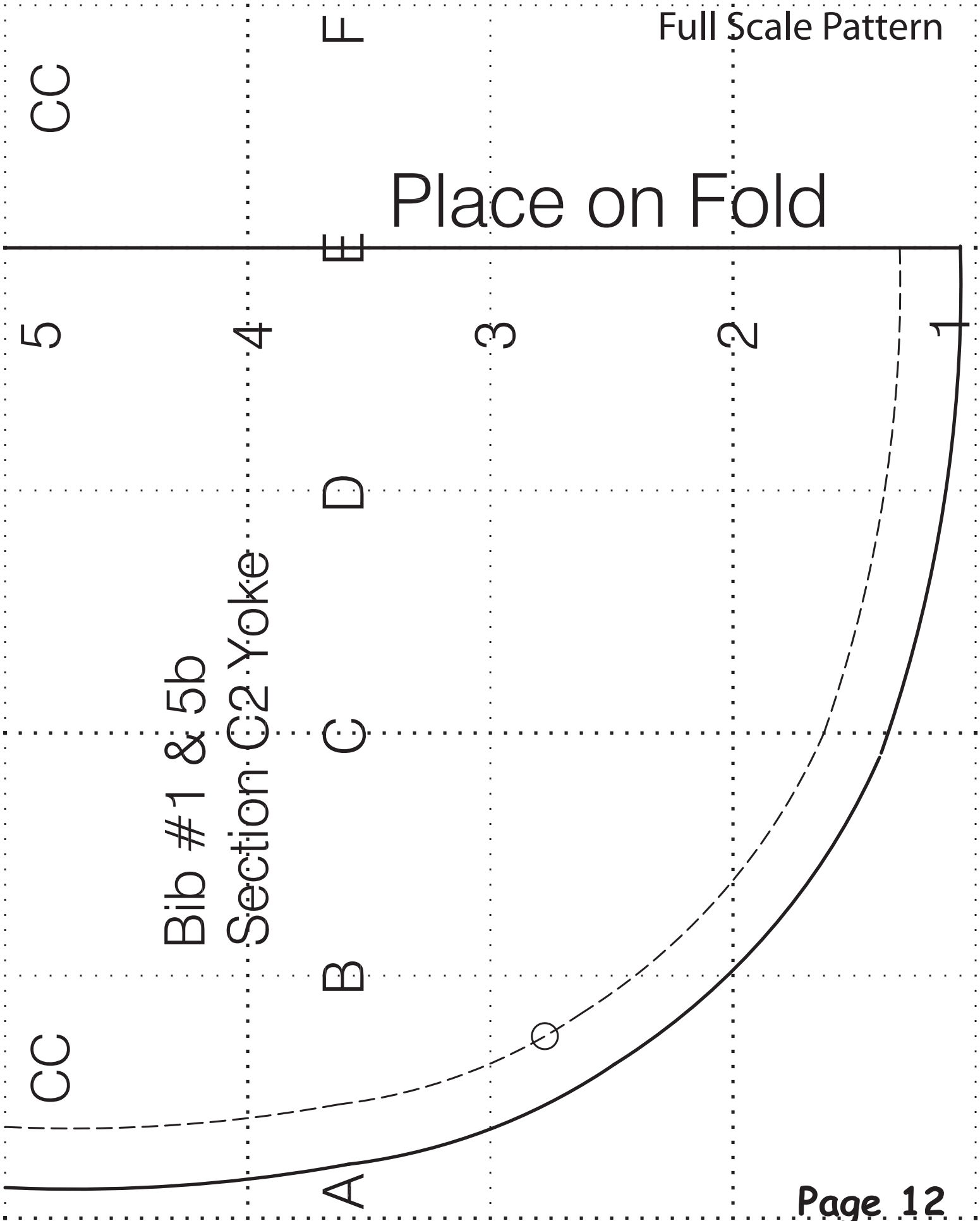
6

5

CC

CC

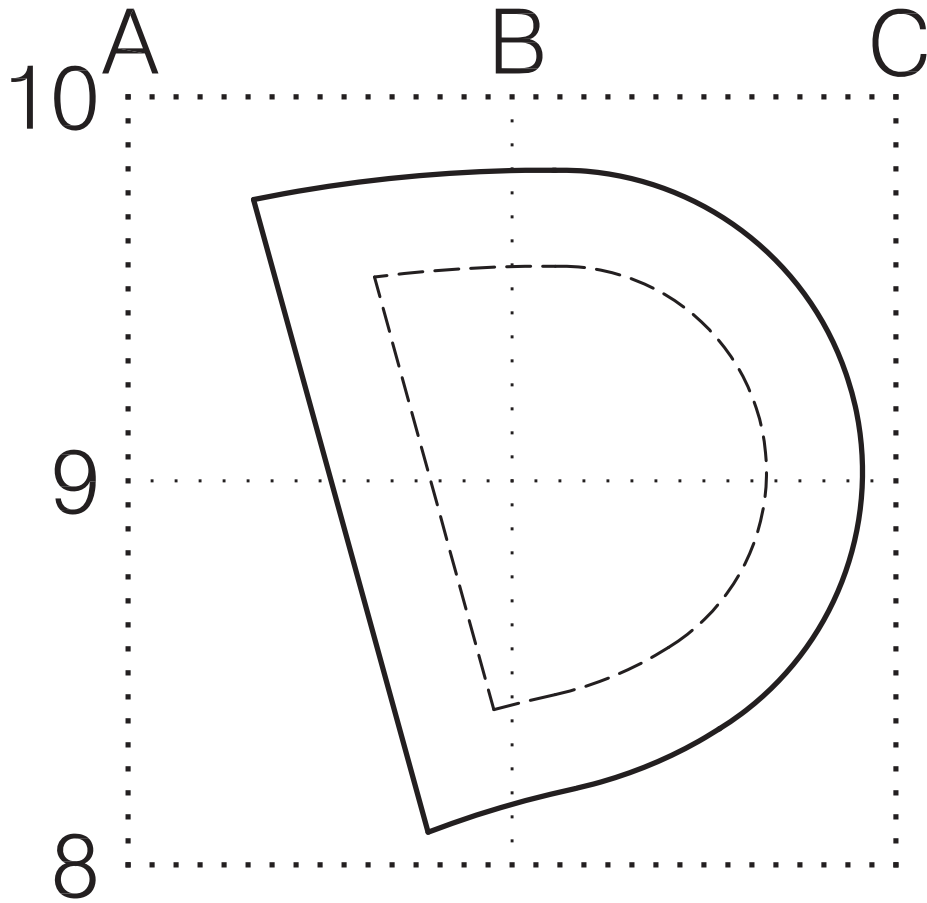
Place on Fold



Bib #1 & 5b
Section C2 Yoke

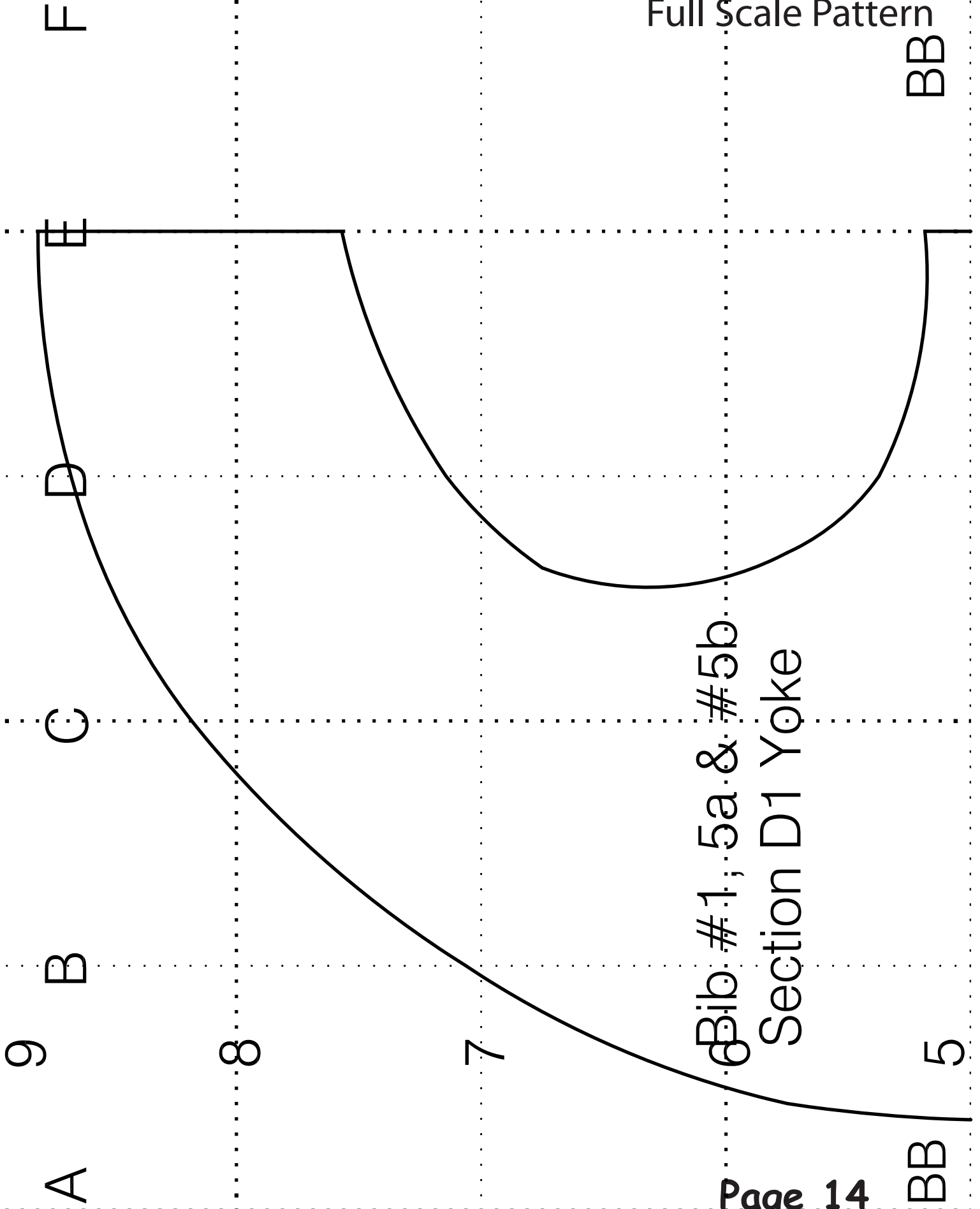
A B C D E F

CC CC



Bib #1 or 5b
Pink Plaid Adult Bib
Section CC Yoke Tie End

BB



Bib. #1, 5a & #5b

Section D1 Yoke

BB

F

BB

Place on Fold

Bib #1,5a & #5b
Section D2 Yoke

E

D

C

B

A

5

4

3

2

1

BB

